

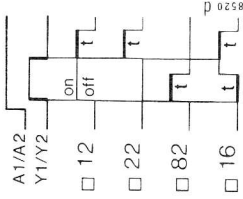
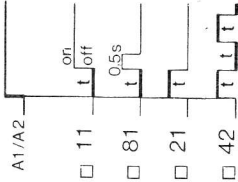
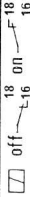
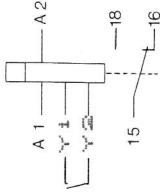
Moeller

Klöckner

040

+ SM3	(FI)	6 I2/A 250 V 3A 380 V AC11
UL: VDE 0435/IEC 255.1.00/B: B VDE 0110 380VAC G.C. VDE 0110 250VAC 6A		
In: AC11: VDE 0660-200 / IEC 337-1 3A/380V		
(SP)	LR16723	6A 250VAC max.,
(UL)	LISTED	STANDARD PILOT DUTY
(R)	IND. CONT. EQ.	B 300
	\$38 F	

WIRING 60/75°C
TIGHTENING TORQUE 1,2 Nm CU ONLY
AWG 20 - AWG 13 FOR SINGLE
AWG 20 - AWG 13 FOR DOUBLE



8520 D